



Comhairle Chontae Chill Chainnigh
Halla an Chontae Sraid Eoin Cill Chainnigh

Pobail agus Áiteanna Inbhuanaíthe a Chruthú

Kilkenny County Council
County Hall John Street Kilkenny

Creating Sustainable Communities and Places



Ref: TC97

08th September 2021

TO: An Cathaoirleach
& Each Member of Kilkenny County Council

RE: **Taking in Charge of Estates**
Section 11 of the Roads Act, 1993
Section 180 of the Planning & Development Act, 2000
As amended by Section 59 of the Planning & Development Act 2010

ESTATE TC97 - Friary Walk Phase 1 & 2, Clashacollare, Callan, Co. Kilkenny

In accordance with the decision of the Council on 21st June 2021, a notice was published stating that Kilkenny County Council proposed to declare the road in the schedule hereunder to be a public road in accordance with the provisions of Section 11 of the Roads Act 1993 in order to facilitate the taking in charge of the estate in accordance with Section 180 of the Planning & Development Act 2000, as amended by Section 59 of the Planning & Development Act 2010.

Written representations or objections in relation to the taking in charge were invited from the public, however none were received. Works to bring the development to a standard suitable for taking in charge have been substantially completed, remaining works will be completed after taking in charge. In addition, the road is considered to be of a public utility. There are little or no financial implications in taking this estate in charge. Water services assets will be taken in charge by Irish Water upon conclusion of its protocol process.

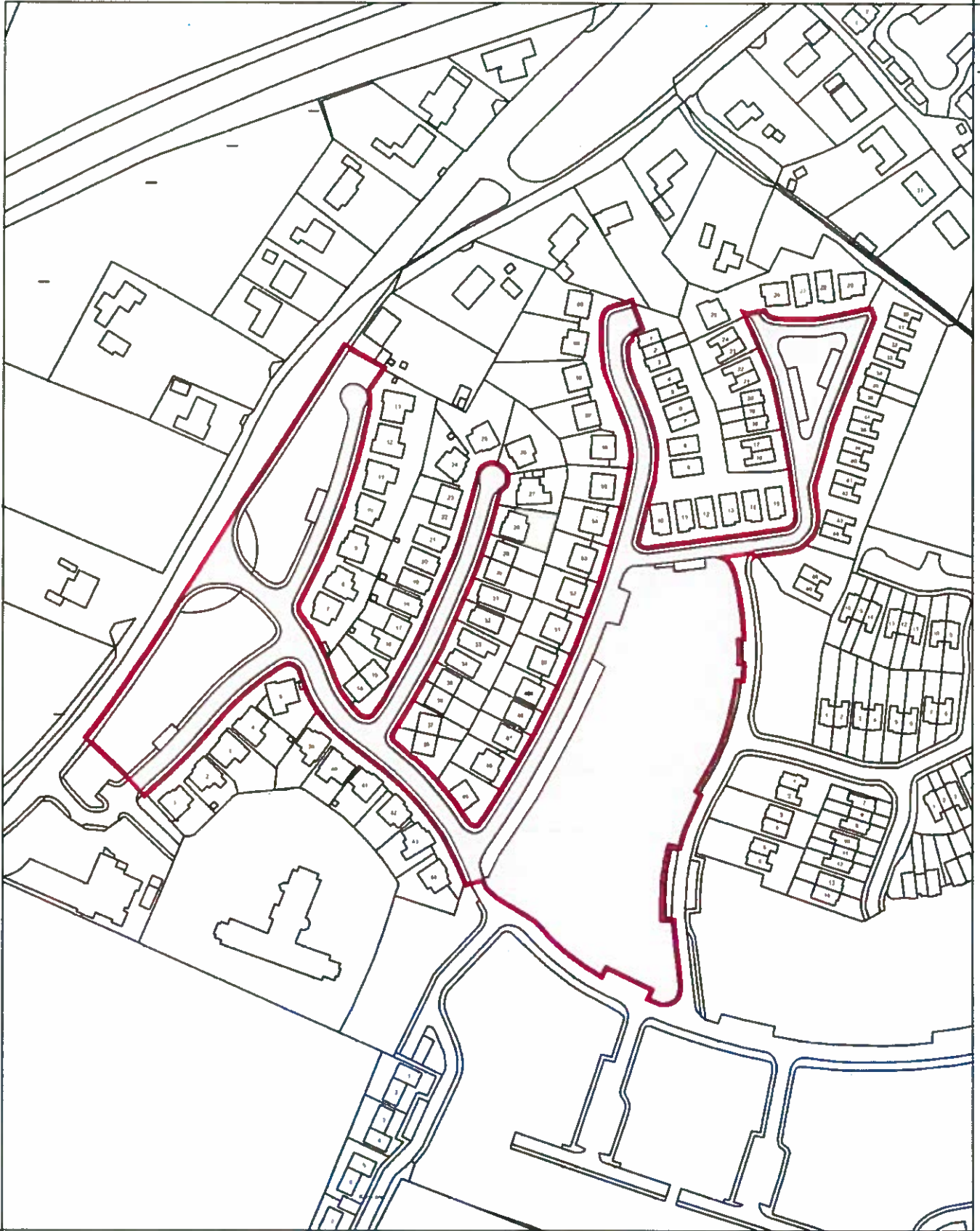
I therefore recommend that Kilkenny County Council resolve to take the estate in charge and that the roads be declared public roads and entered into the roads schedule of Kilkenny County Council.

SIGNED:

Sean McKeown
Director of Services
Planning

THIS IS A COMPUTER GENERATED MAP WITH ITM COORDINATES
OS MAP REF. 5009-A, 5009-B & 5009-07

642142 644869



641705 644318

BASED ON ORDNANCE SURVEY OF IRELAND MAP, LICENCE No. KILKENNY CCMA 08/12

TAKING IN CHARGE
FRIARY WALK PHASE 1 & 2
CALLAN
CO. KILKENNY

FOR
INFORMATION
PURPOSES
ONLY

SCALE 1:2500 @ A4
PLOT DATE 09/06/2021
DRAWN BY A. HYLAND

Cornharle Chontae Chill Chainnigh
Kilkenny County Council
County Hall, John Street, Kilkenny
Telephone: (051) 7794001
Fax: (051) 7794004
Webpage: www.kilkennycoco.ie



Smiling People. Preserving Heritage.