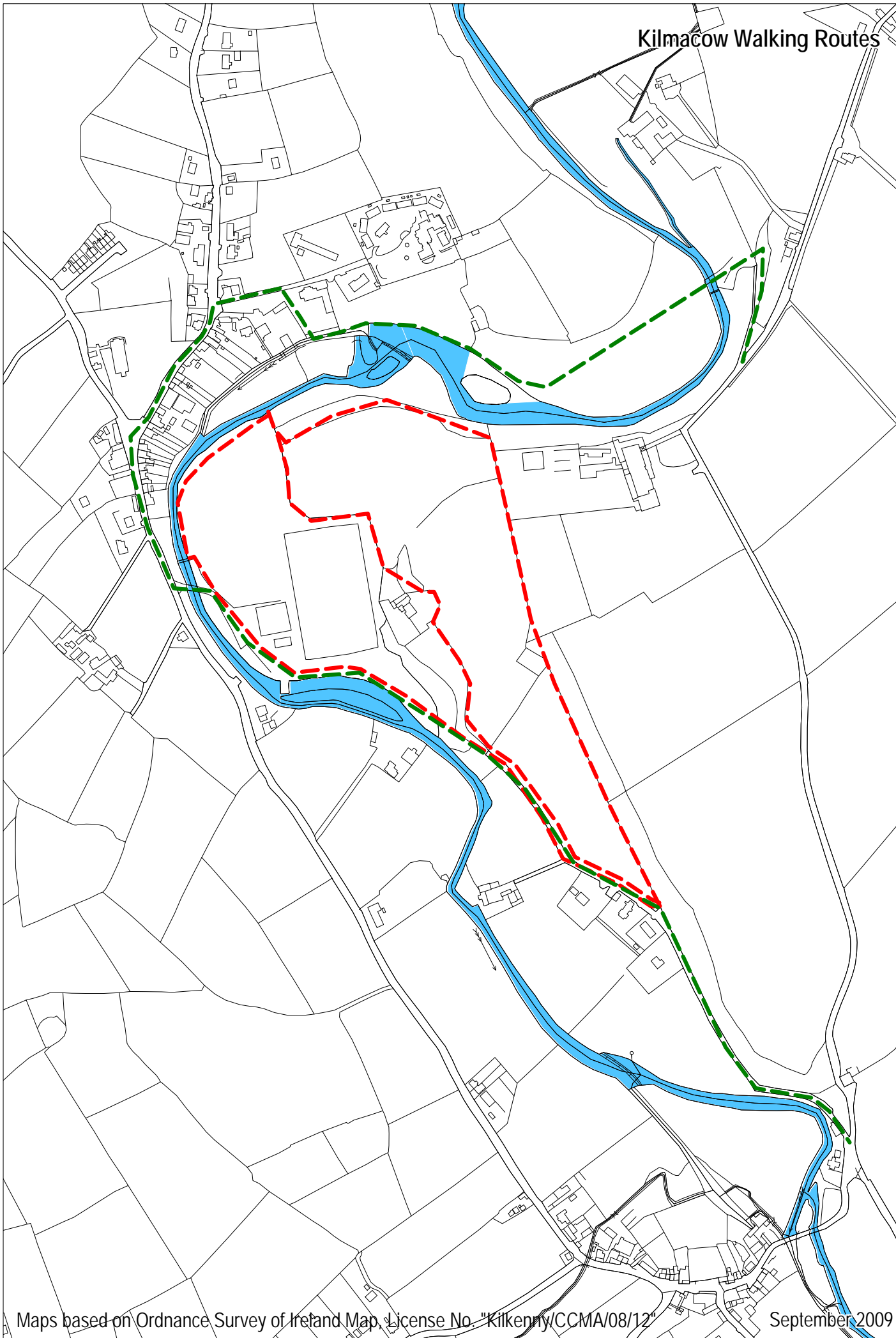


Kilmacow Walking Routes



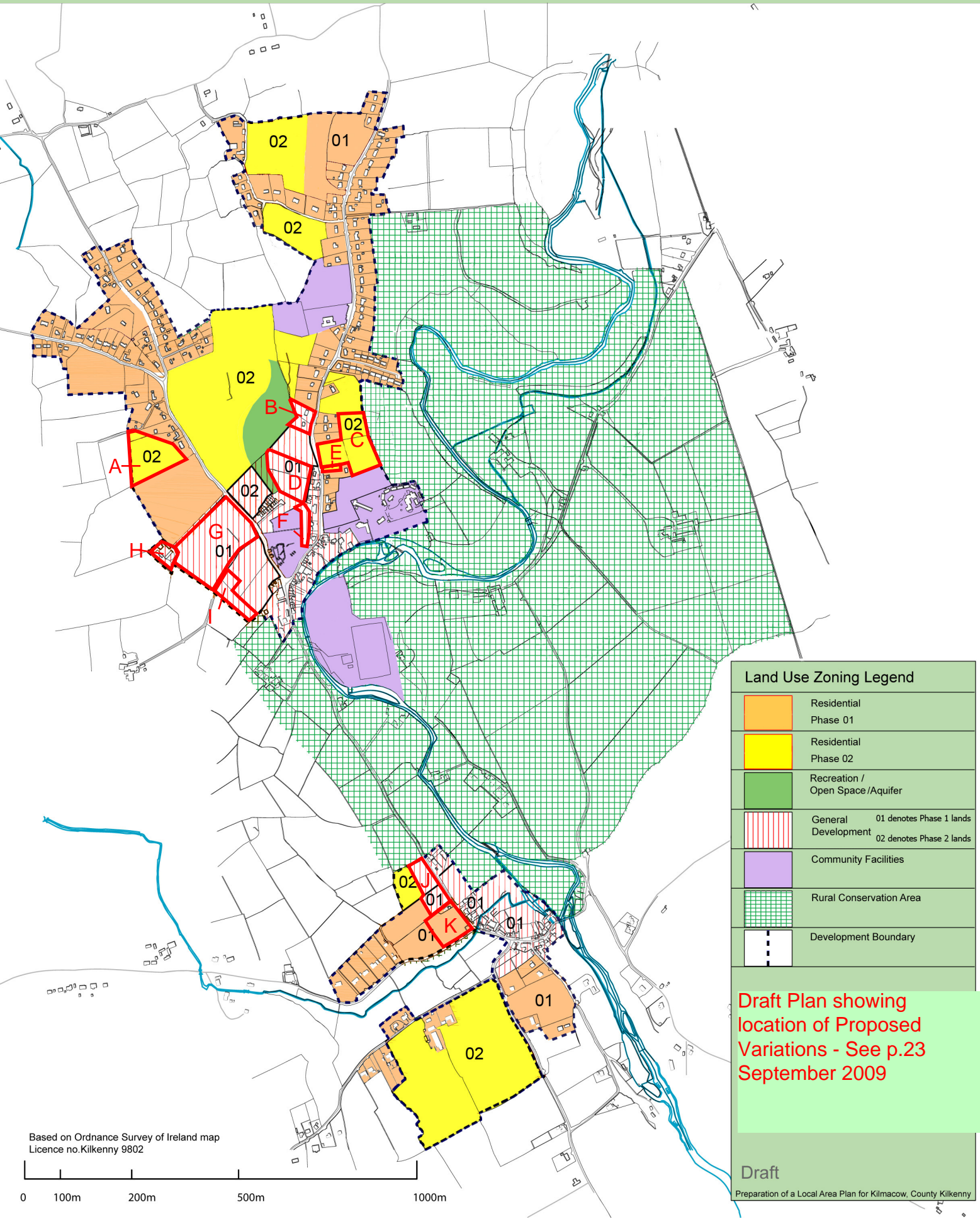


Kilmacow Draft Local Area Plan

Kilkenny County Council
Map 1 : Zoning and Phasing Map

BDP.

Blackhall Green
Dublin 7, Ireland
T +353 [0]1 474 0600
F +353 [0]1 672 7536
www.bdp.com

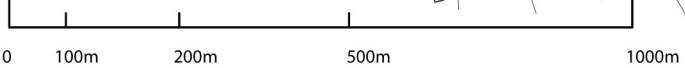


Land Use Zoning Legend	
	Residential Phase 01
	Residential Phase 02
	Recreation / Open Space / Aquifer
	General Development 01 denotes Phase 1 lands 02 denotes Phase 2 lands
	Community Facilities
	Rural Conservation Area
	Development Boundary

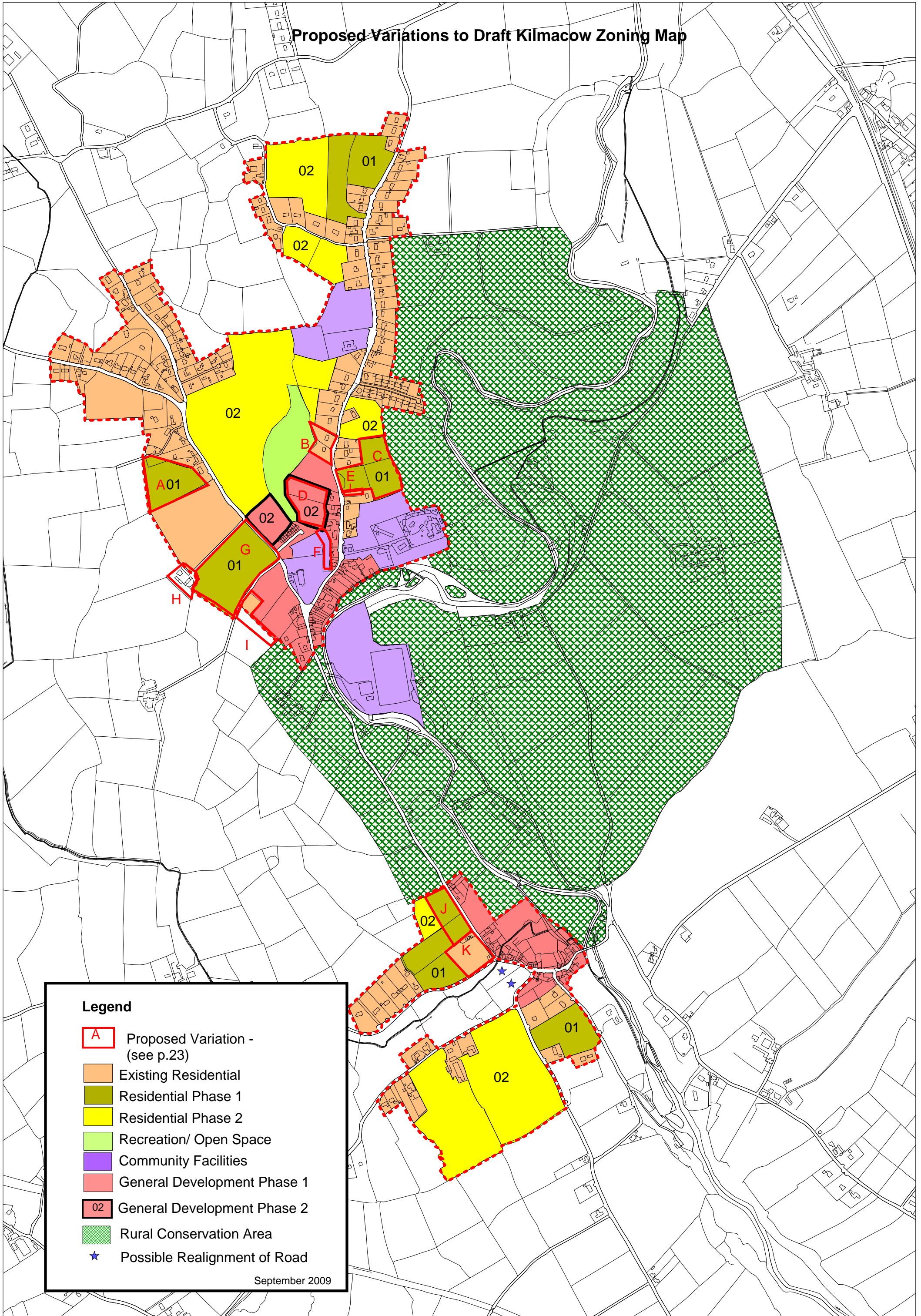
Draft Plan showing location of Proposed Variations - See p.23 September 2009

Draft
Preparation of a Local Area Plan for Kilmacow, County Kilkenny

Based on Ordnance Survey of Ireland map Licence no.Kilkenny 9802



Proposed Variations to Draft Kilmacow Zoning Map

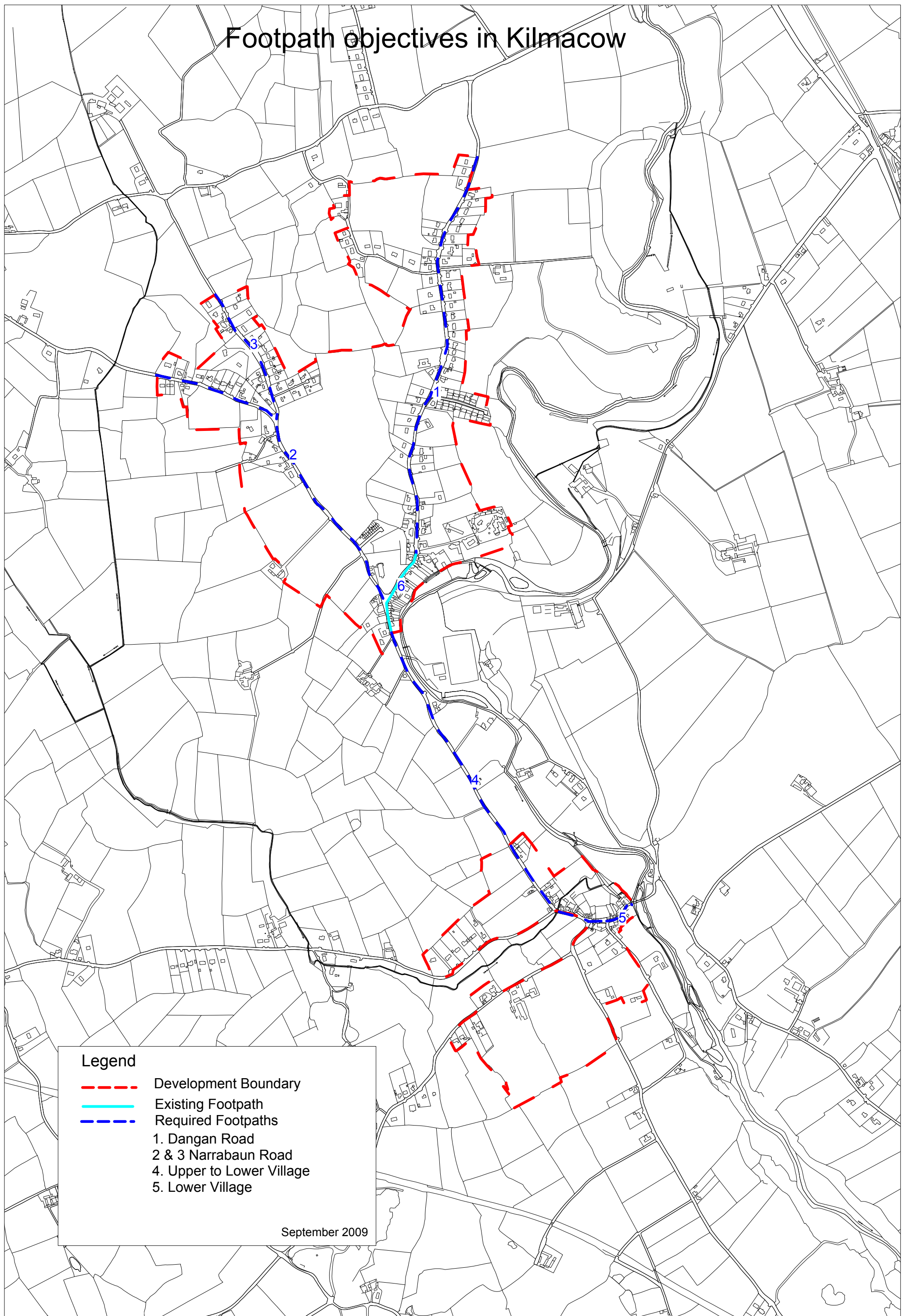


Legend

- A** Proposed Variation - (see p.23)
- Existing Residential
- Residential Phase 1
- Residential Phase 2
- Recreation/ Open Space
- Community Facilities
- General Development Phase 1
- General Development Phase 2
- Rural Conservation Area
- ★ Possible Realignment of Road

September 2009

Footpath objectives in Kilmacow



Legend

- - - Development Boundary
- Existing Footpath
- - - Required Footpaths
- 1. Dangan Road
- 2 & 3 Narrabaun Road
- 4. Upper to Lower Village
- 5. Lower Village

September 2009

Legend

- ★ Protected Structure
- ★ Protected Structure identified on the NIAH
- ★ Structure identified on the NIAH - www.buildingsofireland.ie
- ★ Structure recommended for inclusion on the RPS
- Item of Cultural heritage interest
- Recorded Monument - www.archaeology.ie
- Regionally Important Aquifer

See p. 16-19 of Proposed Variations

KK043-003

KK043-002

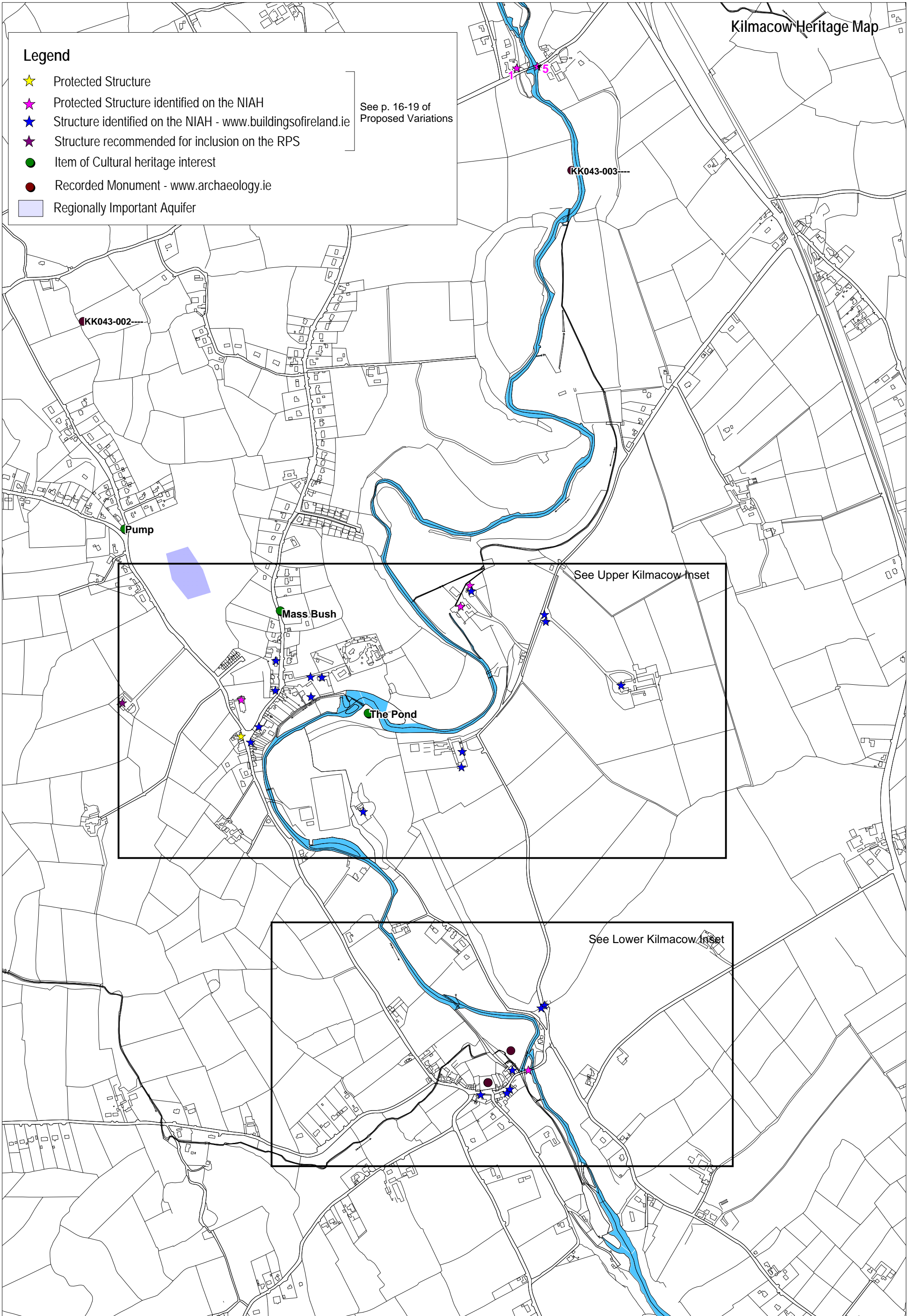
Pump

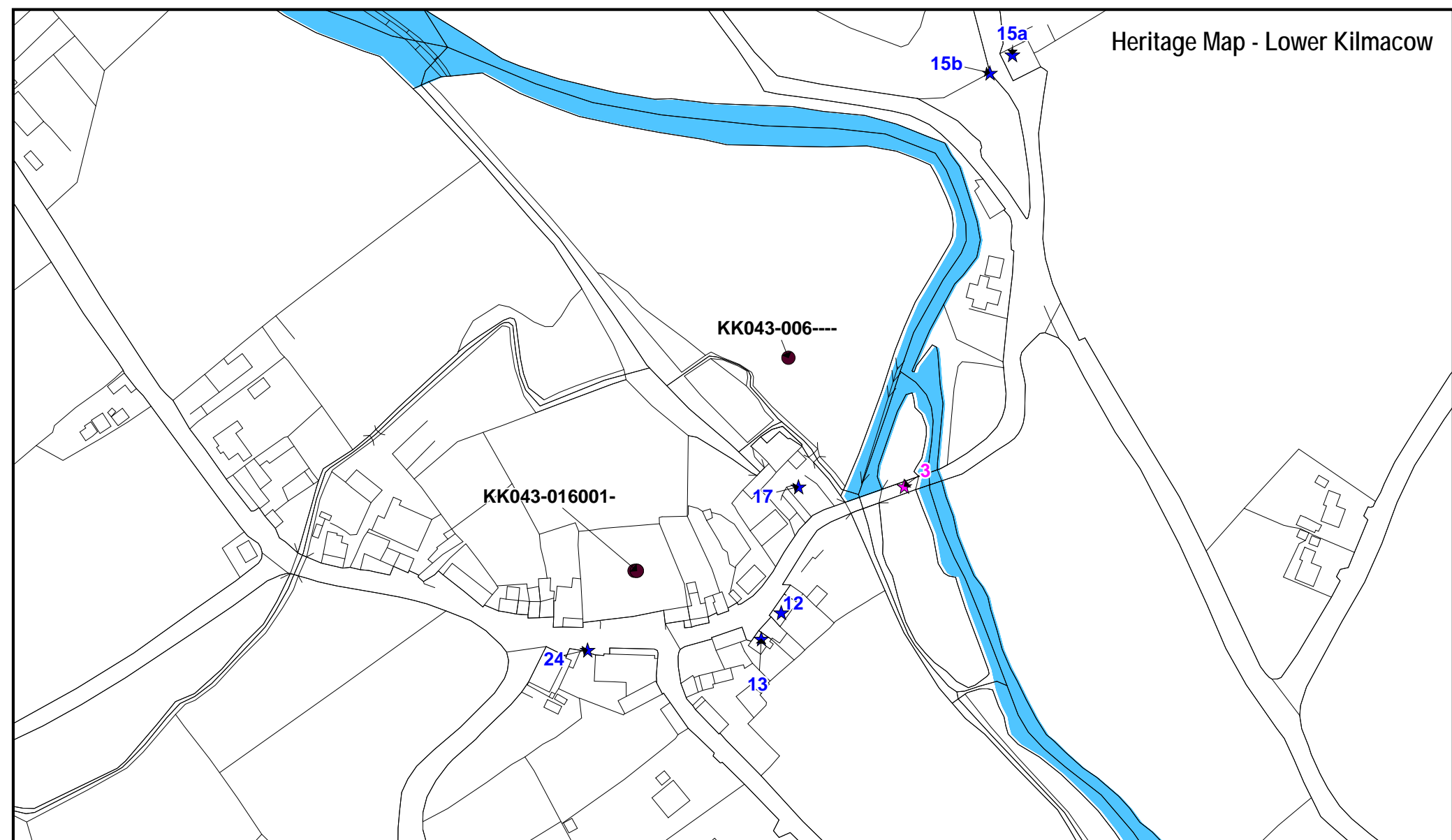
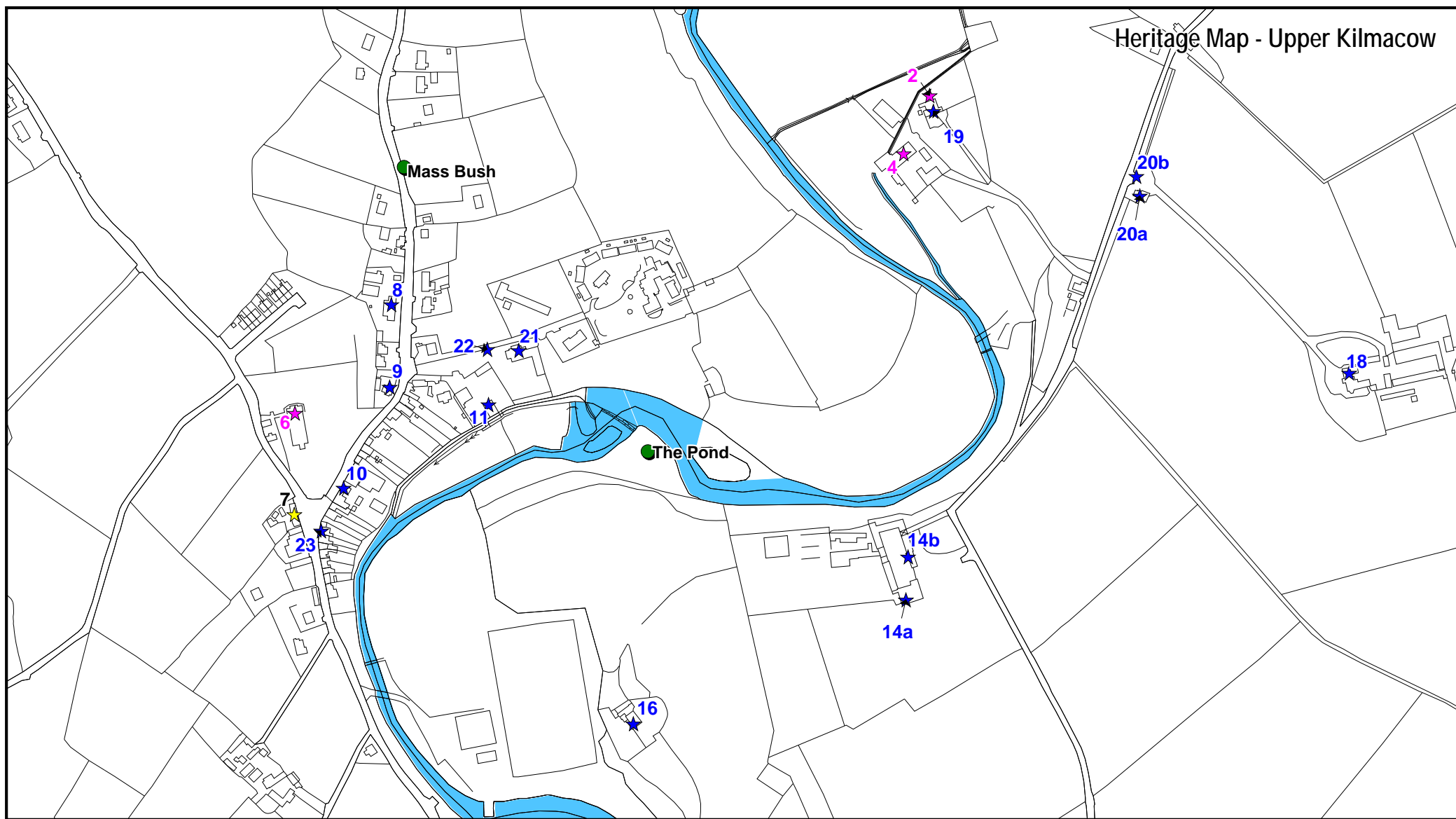
Mass Bush

The Pond

See Upper Kilmacow Inset

See Lower Kilmacow Inset





Legend

- ★ Protected Structure
- ★ Protected Structure identified on the NIAH
- ★ Structure identified on the NIAH - www.buildingsofireland.ie
- ★ Structure recommended for inclusion on the RPS
- Item of Cultural heritage interest
- Recorded Monument - www.archaeology.ie
- Regionally Important Aquifer

See p. 16-19 of Proposed Variations